

# 陳綺貞 九份的咖啡店 [Arranged by Sau Leung]

(陳綺貞 九份的咖啡店 G major)

Capo 1

*Rubato*

清唱

The guitar score is written for a single melodic line on a six-string guitar. The key signature is G major, and the time signature is 4/4. A capo is placed on the first fret. The score is divided into measures, with measure numbers 1, 6, 10, 14, 18, 22, and 26 indicated. The melody is primarily composed of eighth and quarter notes, with some triplets and slurs. The bass line consists of a steady eighth-note pattern, often with triplets. Chord diagrams are provided for specific measures: Am7 (measures 18 and 19), D7b9 (measure 22), C (measure 26), D/C (measure 27), Bm7 (measure 28), and E (measure 29). The score concludes with a final measure at measure 30.

Am7 D C

30

1 0 1 2 2 2 0 2 3 2 0 2 0 0 0 2 0 3 0 1 0 3

D/C Bm7 E Am7

35

2 3 2 3 0 2 3 0 0 0 0 0 1 0 1 2 0 2

Dsus4 Gmaj7

39

0 2 3 3 0 0 2 0 2 3 4 5 4 5 4 5 4 5

Am7

43

3 3 5 5 5 4 5 5 0 0 2 0 3 1 0 2 0 2 0 1 0 3 1 0

D

46

2 2 3 3 5 3 0 1 0 2 0 0 0 0 0 0 2 0 0 0 0 0 0 0

50

2 2 3 2 3 3 3 3 4 5 5 4 5 4 0 1 0 3 1 0

D

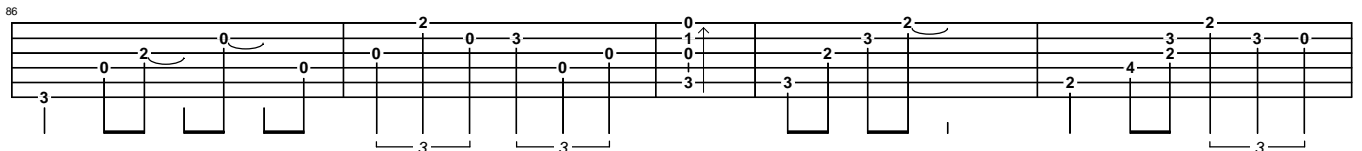
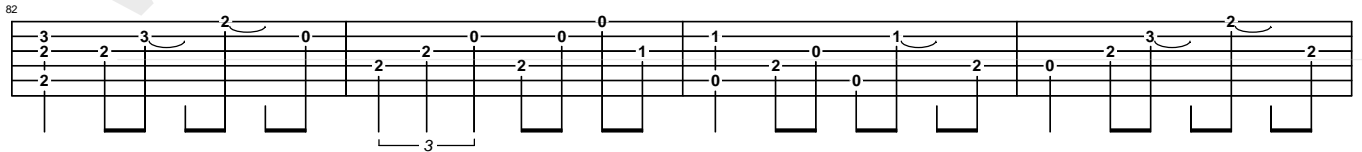
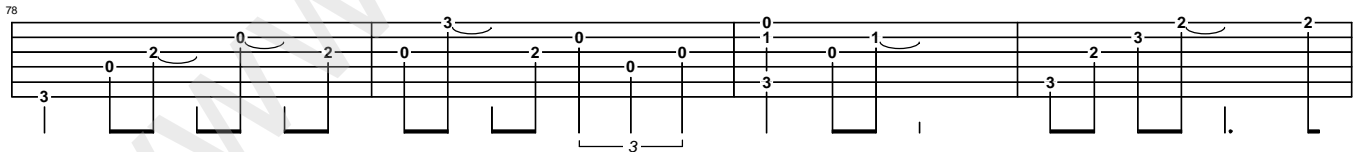
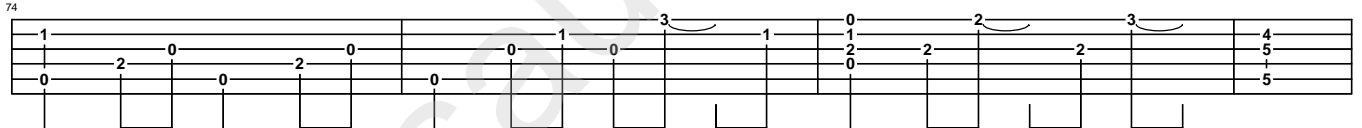
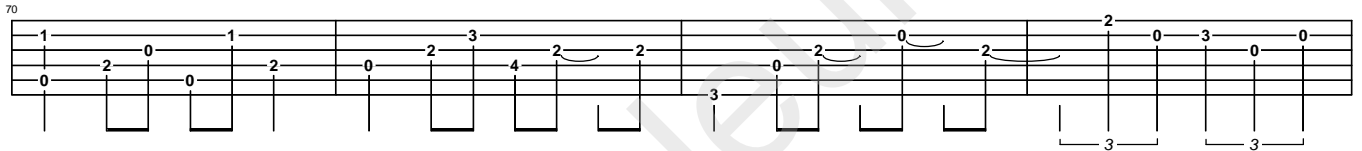
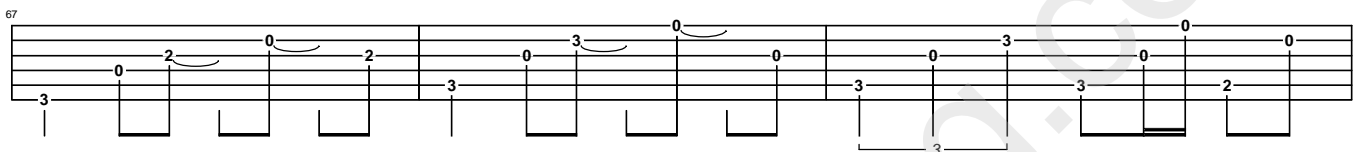
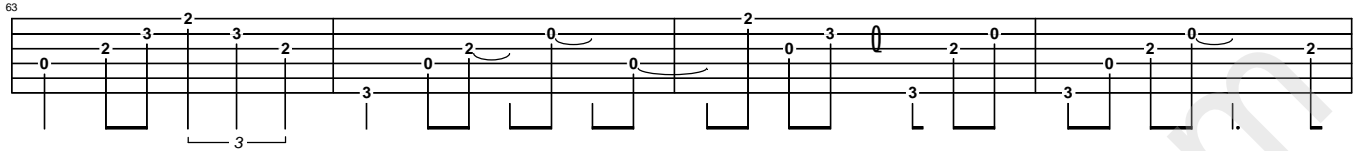
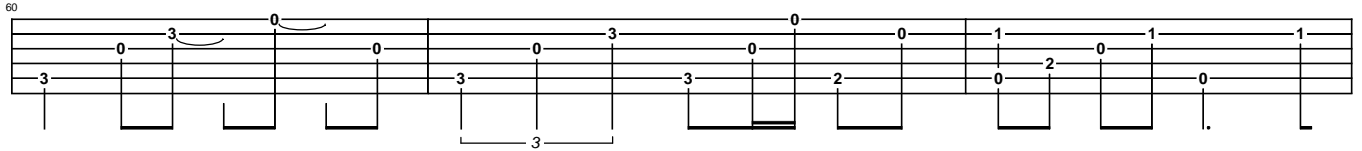
53

0 1 3 1 0 2 2 3 3 5 8 7 5 5

Gsus4 Gmaj9

56

5 5 3 3 5 5 0 2 0 0 2 0 2 0 2 0 2



91

E E/G# Am7 Dsus2 G

96

Am7 Cm

101

Gsus4 G

104